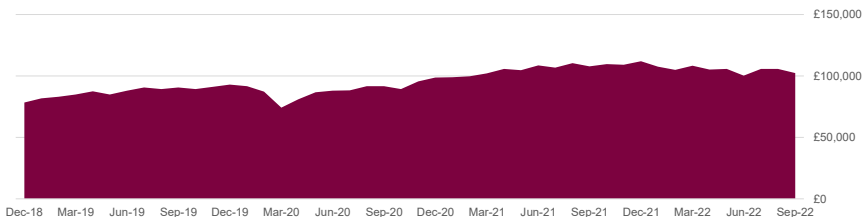


Portfolio Overview: GBP Aggressive Growth Model

Version Date September 30, 2022

Portfolio Overview*



* Calculations are based on \$100,000 and the chart shows the GBP equivalent

Trailing Returns

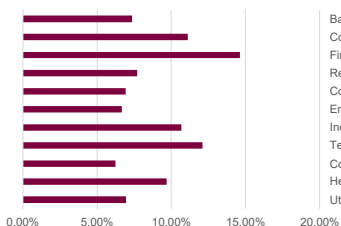
	1 Month	3 Month	Since Inception Annualized
Portfolio	-9.73%	-8.68%	2.85%
Dividend Yield	3.74%		

Portfolio Summary

The investment seeks long-term growth of capital primarily through investment in ETFs & equity securities deploying a core plus satellite investment strategy; current income is a secondary objective. The fund pursues its objective by investing, under normal circumstances, at least 80% of its net assets (for investment purposes) in a diversified portfolio consisting primarily of "Core" ETFs, identified by the Fund manager as having growth characteristics. It may also invest up to 20% of its total assets in "satellite" positions primarily composed of equity securities to complement the core holdings of the portfolio. The portfolio utilises a natural currency hedge towards the Great British Pound which is built into underlying holdings, protecting the overall portfolio against currency risk consisting in holding two assets whose value changes offset each other in relation to the FX fluctuations.

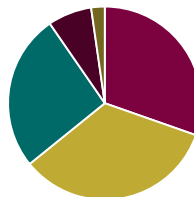
Equity Analysis

Sector Breakdown



	Portfolio	Benchmark	Drift
Basic Materials	7.35%	3.85%	3.50%
Consumer Cyclical	11.11%	11.01%	0.10%
Financial Services	14.61%	14.93%	-0.32%
Real Estate	7.70%	2.88%	4.81%
Communication Services	6.93%	7.18%	-0.25%
Energy	6.67%	4.95%	1.72%
Industrials	10.67%	10.02%	0.64%
Technology	12.10%	19.97%	-7.87%
Consumer Defensive	6.24%	8.09%	-1.85%
Healthcare	9.68%	13.91%	-4.23%
Utilities	6.95%	3.21%	3.74%

Market Cap Breakdown



	Portfolio	Benchmark	Drift
Giant Cap	30.37%	47.42%	-17.05%
Large Cap	33.79%	36.34%	-2.54%
Medium Cap	26.21%	16.11%	10.09%
Small Cap	7.32%	0.13%	7.20%
Micro Cap	2.30%	0.00%	2.30%

Valuation Multiples

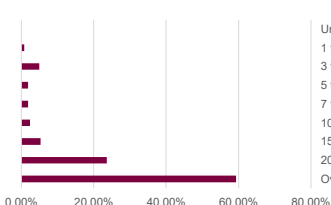
	P/E Ratio	P/B Ratio	P/S Ratio	P/FC Ratio
Portfolio	13.53	2.27	1.68	10.39
Benchmark	16.89	2.66	1.95	12.87

Profitability

	Profit Margin	ROE	ROA	Debt to Capital
Portfolio	16.63%	21.08%	7.81%	37.96%
Benchmark	17.80%	27.33%	10.02%	41.23%

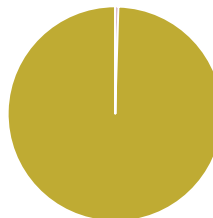
Fixed Income Analysis

Maturity Breakdown



	Portfolio	Benchmark	Drift
Under 1 Year	0.00%	2.88%	-2.88%
1 to 3 Years	0.76%	21.58%	-20.82%
3 to 5 Years	4.93%	20.23%	-15.29%
5 to 7 Years	1.82%	14.52%	-12.69%
7 to 10 Years	1.81%	17.02%	-15.20%
10 to 15 Years	2.44%	7.90%	-5.46%
15 to 20 Years	5.34%	5.05%	0.29%
20 to 30 Years	23.60%	8.50%	15.10%
Over 30 Years	59.29%	2.33%	56.96%

Credit Breakdown



	Portfolio	Benchmark	Drift
Government	0.44%	36.18%	-35.74%
Corporate	99.56%	5.43%	94.13%
Securitized	0.00%	1.51%	-1.51%
Municipal	0.00%	0.00%	0.00%
Cash	0.00%	0.90%	-0.90%
Derivative	0.00%	55.99%	-55.99%

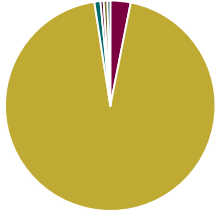
Fixed Income Statistics

	Current Yield	Effective Duration	Avg Coupon	Avg Credit Score	Yield to Maturity	Avg Price
Portfolio	7.39%	4.60	5.99%	BB+	0.00%	87.68
Benchmark	2.11%	7.12	2.16%	BBB-	2.35%	97.54

Region Exposure

	Portfolio	Benchmark		Portfolio	Benchmark		Portfolio	Benchmark	Market Maturity			
Americas	52.11%	70.09%	Greater Asia	16.61%	11.07%	Greater Europe	31.28%	18.69%				
North America	49.54%	69.94%	Japan	2.46%	6.39%	United Kingdom	13.98%	4.39%			Developed Markets	Emerging Markets
Latin America	2.57%	0.15%	Australasia	0.95%	2.23%	Europe Developed	14.15%	14.03%			Portfolio	Benchmark
			Asia Developed	2.89%	1.35%	Europe Emerging	1.06%	0.06%			84.28%	15.72%
			Asia Emerging	10.31%	1.11%	Africa & Middle East	2.10%	0.22%			98.52%	1.48%

Asset Allocation



	Portfolio	Benchmark	Drift
Cash	3.11%	0.63%	2.48%
Stock	94.48%	94.64%	-0.17%
Bond	0.94%	4.67%	-3.73%
Convertible	0.47%	0.04%	0.42%
Preferred	0.59%	0.00%	0.59%
Other	0.41%	0.01%	0.40%

Portfolio Style Exposure

	Value	Blend	Growth
Large	21.20%	24.02%	18.76%
Mid	10.77%	11.05%	4.63%
Small	1.78%	4.23%	3.55%

Risk

MPT Statistics

Portfolio	Beta	R-Squared
	0.87	0.97

Other Risk

Portfolio	Standard Deviation	Correl.	Upside	Downside
	17.40%	0.99	73.32	123.41

Top 10 Holdings

Benchmark

1	Holding Name	1 Year Return	3 Year Return	5 Year Return	10 Year Return	Dividend Yield	Expense Ratio
1	Vanguard S&P 500 ETF	-15.48%	8.12%	9.20%	11.66%	1.80%	0.60%
2	Vanguard FTSE All-Wld ex-US ETF	-24.80%	-1.13%	-0.58%	3.32%	4.04%	0.07%
3	First Trust United Kingdom AlphaDEX® ETF	-32.10%	-5.40%	-3.17%	1.67%	7.57%	0.80%
4	First Trust Emerging Mkts AlphaDEX® ETF	-27.01%	-3.74%	-3.76%	0.75%	7.10%	0.80%
5	First Trust Small Cap Gr AlphaDEX® ETF	-24.27%	7.48%	5.80%	9.82%	0.88%	0.70%
6	First Trust Europe AlphaDEX® ETF	-34.31%	-5.41%	-4.16%	3.54%	5.61%	0.80%
7	Vanguard Value ETF	-6.50%	6.17%	7.09%	10.51%	2.75%	0.04%
8	First Trust Dow Jones Intl Intnt ETF	-51.13%	-3.41%	NA	NA		
9	Vanguard Real Estate ETF	-18.68%	-1.62%	3.07%	6.23%	3.89%	0.12%
10	First Trust Global Wind Energy ETF	-26.51%	6.50%	4.74%	11.12%		

- 1 iShares MSCI World ETF
- 2 iShares Core International Aggt Bd ETF

This report is for illustration purposes only. Accuracy of performance reporting cannot be guaranteed. For accurate values of the investments in your account please consult the statements provided by the custodian. Dunhill Financial, LLC is regulated by the Security Exchange Commission (SEC) in the United States. You can consult our latest regulatory documents on www.dunhillfinancial.be/adv-part-2. For more information on Dunhill Financial, LLC's regulation, please visit: <https://brokercheck.finra.org/>